

Mill Spindle couplings



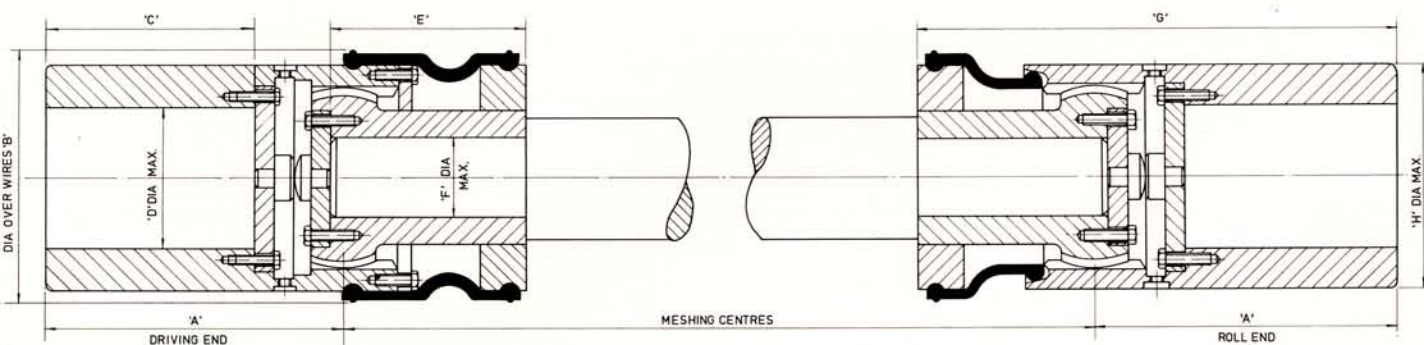
by



SHACKLETON ENGINEERING LTD.

DESIGNERS & MANUFACTURERS OF INDUSTRIAL GEARBOXES

STANDARD TYPE



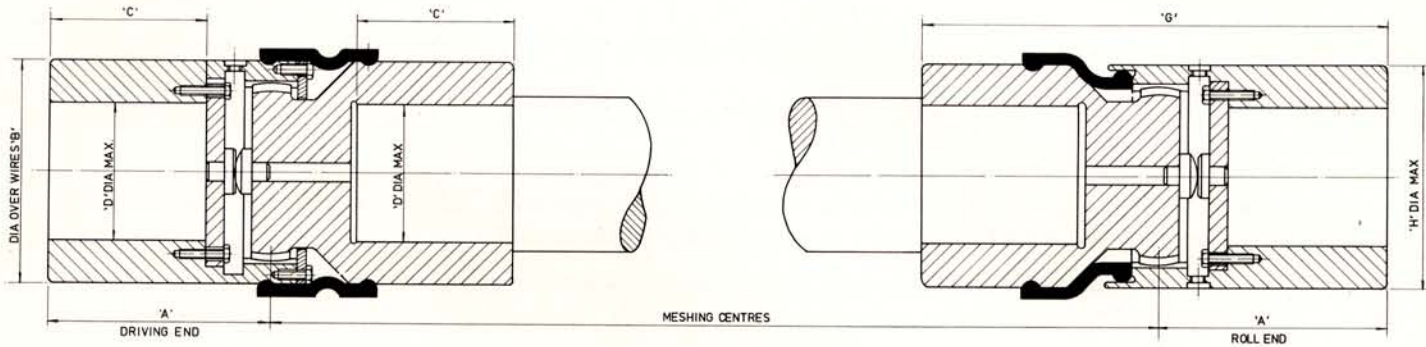
Size of Coupling	H.P./100 R.P.M.				A	B	C	D	E	F	G	H	Wt. kg.*	G.D. ² kg.m. ² †
	Accurately Aligned	1° Mis-alignment	2° Mis-alignment	3° Mis-alignment										
145	72	39	22	13	170.325	142.9	120.6	80	109	44	270.7	129	33	0.09
160	83	45	25	15	176.725	155.5	127	86	118	49	286.1	141	40	0.13
170	115	60	33.5	19.5	189.65	168.5	136.5	96	121	58	300.1	154	52	0.20
185	128	67	37.5	21.5	195.65	181	142.8	102	127	63	310.4	167	62	0.29
195	167	85	47	27.5	206.875	193.7	152.4	111	127	70	322	180	77	0.38
210	188	96	52.5	30.5	213.275	207	158.8	117	131	73	332.4	192	91	0.55
220	223	114	62	35.5	224.3	217.5	168.2	126	137	79	347.8	202	108	0.76
235	247	131	68	39	230.7	231.5	174.6	135	143	86	360.2	216	126	1.01
245	289	149	79	45	240	243	180.9	140	150	89	375	228	149	1.30
260	317	164	86	48	249.6	257.5	190.5	151	166	95	400.6	242	173	1.72
270	395	203	92	53	260.5	268.5	200	157	168	101	416.1	253	198	2.39
300	506	259	115	66	280.25	297.5	215.9	175	169	114	431	282	252	3.40
325	632	324	142	80	307.15	320.5	231.7	190	185	127	472.4	305	327	5.29
345	782	399	173	96	324.55	340	247.6	206	188	136	491.3	330	401	7.77
370	909	444	180	106	347.70	365	263.5	221	194	146	523.7	355	505	11.05
400	1131	551	220	128	367.10	395	279.4	238	198	162	545.6	381	602	15.25
415	1282	623	248	142	384.47	410	295.27	253	207	168	570.47	406	724	20.71
440	1556	758	296	168	401.95	435	311	270	214	181	593.2	432	843	28.01
465	1798	837	320	187	422.95	460	327	285	223	193	621.7	457	989	36.25
490	2019	938	357	206	441.975	485	342.9	301	236	200	652.1	482	1141	46.37
515	2428	1129	422	242	459.40	510	358.7	317	242	216	673.9	508	1221.7	59.35
540	2695	1251	467	266	477.80	535	374.6	333	246	225	694.8	533	1500	74.68
565	3028	1325	491	289	495.325	560	390.52	348	255	235	719.7	558	1670	93.41
590	3365	1470	540	317	512.45	585	406	365	261	244	741.2	584	1912	115.33
620	4010	1750	633	367	532.25	615	422.3	380	265	260	763.4	609	2141	141.54

All Dimensions in Millimetres.

* For Couplings Bored out to Maximum Diameters but not including Spindle Shaft.

† Including the Portion of Shafts on which Couplings are Mounted but not including remainder of Spindle Shaft which may vary in length up to twelve diameters.

HEAVY DUTY TYPE



Size of Coupling	H.P./100 R.P.M.				A	B	C	D	G	H	Wt. kg.*	G.D. ² kg.m ² †
	Accurately Aligned	1° Mis-alignment	2° Mis-alignment	3° Mis-alignment								
145	210	210	175	175	170.325	142.9	117	80	389.7	129	52.2	0.14
160	267	267	199	153	176.725	155.5	124	86	406.1	141	63.5	0.22
170	455	440	272	209	189.65	168.5	134	96	431.4	154	84	0.33
185	547	495	307	234	195.65	181	140	102	449.4	167	100	0.46
195	722	640	382	298	206.875	193.7	150	111	465	180	122.5	0.67
210	809	720	430	334	213.275	207	156	117	481.4	192	145.2	0.88
220	960	851	510	394	224.3	217.5	165	126	506.8	202	172.4	1.2
235	1066	943	560	434	230.7	231.5	172	135	529.2	216	206.4	1.6
245	1246	1106	662	509	240	243	178	140	553.0	228	245	2.1
260	1368	1214	717	554	249.6	257.5	188	151	577.6	242	279	2.8
270	1359	1156	680	473	260.5	268.5	198	157	600.1	253	319.8	3
300	1733	1487	868	607	280.25	297.5	214	175	640.0	282	415	5
325	2174	1848	1086	757	307.15	320.5	229	190	691.4	305	526.2	7
345	2682	2282	1338	922	324.55	340	245	206	732.3	330	660	12
370	3208	2490	1409	930	347.70	365	261	221	782.7	355	818.8	17
400	4000	3100	1754	1028	367.1	395	277	238	824.6	381	991.1	24
415	4521	3500	1977	1151	384.47	410	293	253	878.5	406	1186.2	34
440	5505	4270	2404	1391	401.95	435	309	270	917.2	432	1406.2	45
465	6383	4764	2627	1496	422.95	460	325	285	962.7	457	1682.9	61
490	7160	5340	2939	1656	441.975	485	340	301	1012.1	482	1939	77
515	8626	6430	3529	1979	459.40	510	357	317	1052.7	508	2247.6	100
540	9596	7149	3929	2205	477.80	535	372	333	1088.8	533	2558.3	126
565	10824	7655	4102	2267	495.325	560	388	348	1133.7	558	3009.6	158
590	10252	8529	4568	2527	512.45	585	404	365	1171.2	584	3306.7	195
620	14370	10155	5400	2964	532.25	615	420	380	1211.5	609	3728.6	240

All Dimensions in Millimetres.

* For Couplings Bored out to Maximum Diameters but not including Spindle Shaft.

† Including the Portion of Shafts on which Couplings are Mounted but not including remainder of Spindle Shaft which may vary in length up to twelve diameters.